

MAMS SISO

A *Digital* Sign-In/Out System (SISO) for Mass Academy

Charles Tang, David Barsoum, Tarun Eswar, Mrs. Taricco (Advisor)



Less paper. Better for the environment.

Our product allows for the reduction of paper previously used to track sign-in/outs. Minimal maintenance is required to keep the system in use.

Key Features

Digital dashboard of student SISO behavior and student **attendance reports.**

Unique identifiers for each student using RFID tags, enhanced accuracy to prevent false sign-in/outs.

Front-end hardware to allow tap-to-sign-in/out and interacting with RFID tags.



Designed uniquely for Mass Academy.

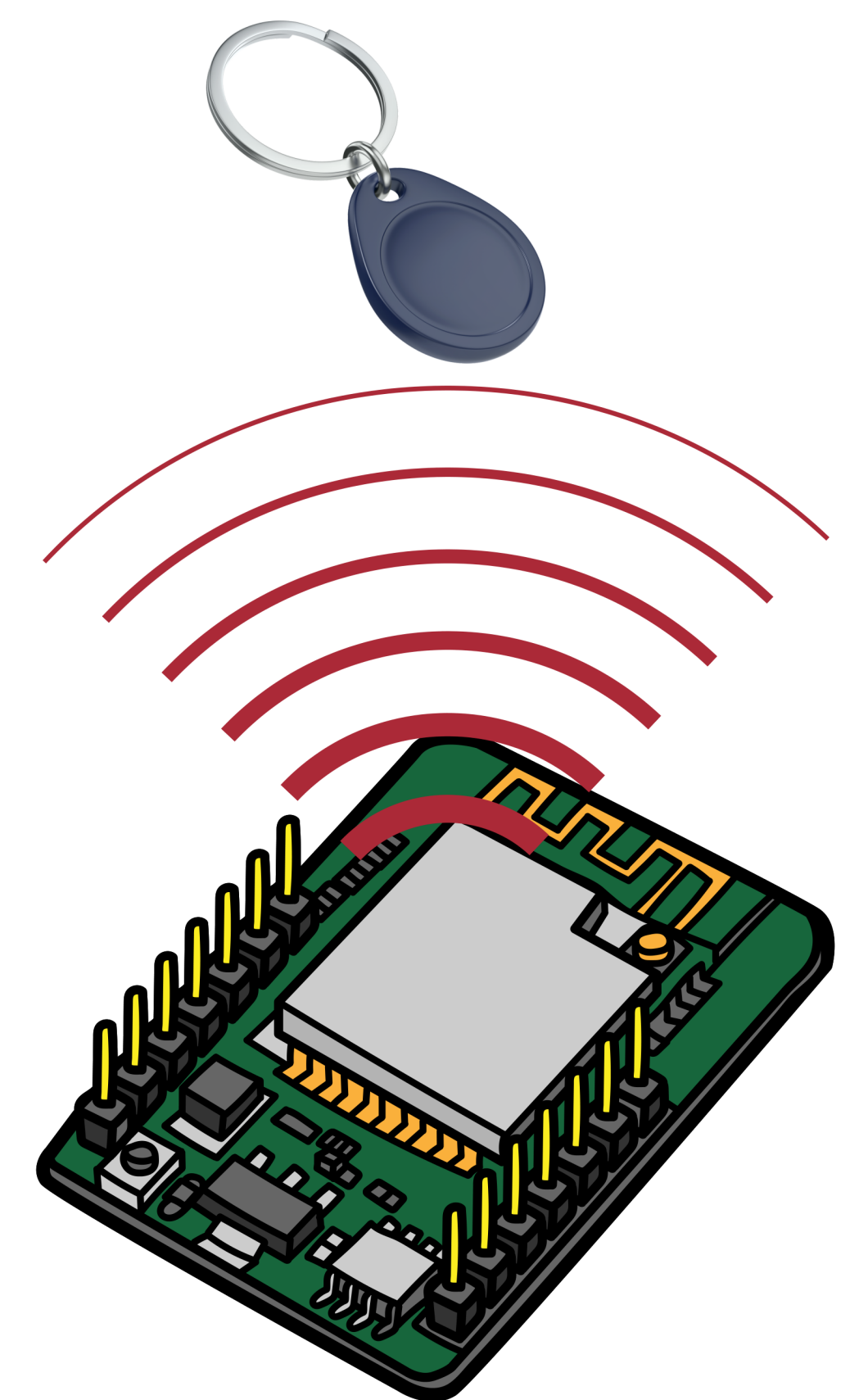
Our product is designed for the Mass Academy administration team with industry-standard authentication procedures and full integration with the WPI digital infrastructure.

https://mams-siso.wpi.edu

Attendance for April 24, 2023

All Students Requiring Attention Visualization

ID	Term	Name	Expected Sign-in	Sign-in Time	Sign-out/Re-entry Time	Status	Location
1	D	Kweku Akese	07:40 AM	07:32 AM	04:28 PM	Present	Not Here
2	D	Ashwina Bangari	07:40 AM	07:27 AM	03:08 PM	Present	Not Here
3	D	David Barsoum	07:40 AM	07:37 AM	03:51 PM	Present	Not Here
4	D	Mihika Chhalasani	07:40 AM	07:39 AM	03:49 PM	Present	Not Here
5	D	Alex Chen	07:40 AM	07:39 AM	03:44 PM	Present	Not Here
6	D	Amy Chen	07:40 AM	07:20 AM	N/A	Not Signed Out Present	Mass Academy
7	D	McKenna Childs	07:40 AM	06:46 AM	N/A	Not Signed Out Present	Mass Academy
8	D	Omar El-Nesr	07:40 AM	N/A	N/A	Requires Attention	Not Here



• Fully integrated with the WPI infrastructure

- Dashboard hosted on a WPI VM with WPI hardware support
- WPI MySQL database provides real-time cloud storage for each sign-in/out

• Full-featured online dashboard for Mass Academy administrators

- To keep track of daily attendance
- Automatically tracks holidays, senior schedules, and term start/end dates to ensure accurate results

• Facial recognition capabilities

- Facial recognition is being investigated as potential means for an easier sign-in/out process

• Real-time logging and updates

- Our system minimizes margins of error with a state-of-the-art custom API that provides instantaneous updates

• Over 4 months of alpha- and beta-testing with over 50 participants

